

Antenna, Strip

ERF4013

Description

The ERF4013 antenna is a black quad band antenna with a SMA Male connector. The antenna can also be used in these frequency bands: 824 ~ 1150 MHz and 1,6 ~ 4,0 GHz. The antenna can be used for applications , M2M , Wi-Fi, Bluetooth, LTE, GSM and more.



Technology

- WiFi
- Bluetooth
- Zigbee
- LTE
- GSM

Features

Electrical Properties	Description		
Frequency marker	Frequency band MHz	Return loss dB	V.S.W.R.
1	700	-9.5	< 2.0
2	800	-18.2	< 1.3
3	868	-12.4	< 1.6
4	900	-13.4	< 1.5
5	915	-10.6	< 1.8
6	1.800	-12.0	< 1.7
7	1.900	-12.3	< 1.6
8	2.100	-18.4	< 1.3
9	2.400	-12.5	< 1.6
10	2.600	-10.8	< 1.8
11	3.500	-18.3	< 1.3
12	5.000	-13.2	< 1.6
13	5.800	-12.7	< 1.6

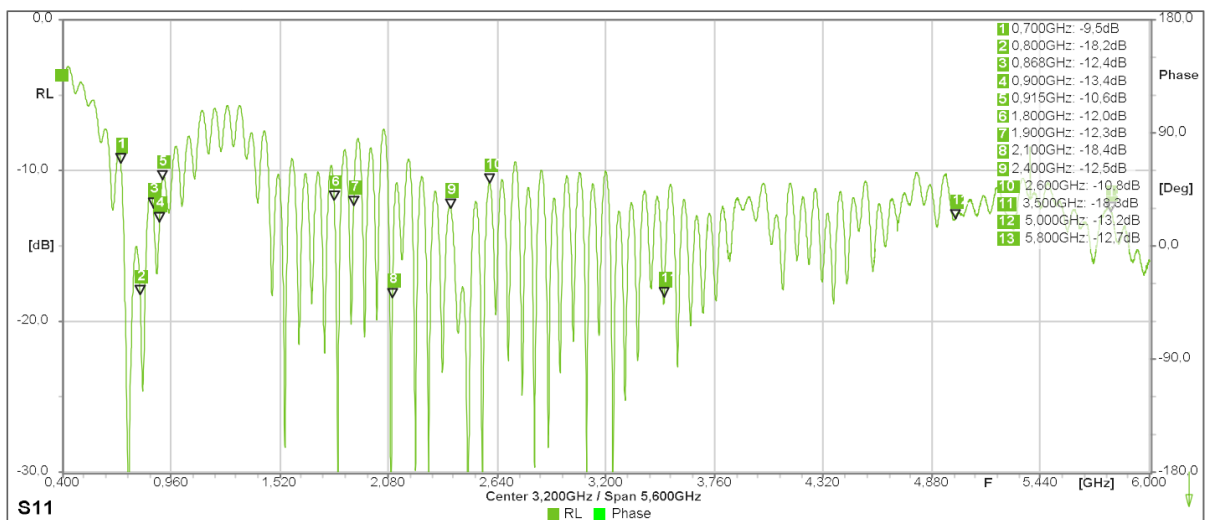
Antenna, Strip

ERF4013

Nominal Impedance	50 Ω
Polarization	Horizontal
Mechanical Properties	
Antenna	External Strip
Mounting	Adhesive
Connector Type	SMA (Male)
Dimensions	103.4 mm ±5
Color	Black
Cable Length	1500 mm ±20
Cable Type	RG-174 A/U

Antenna Properties

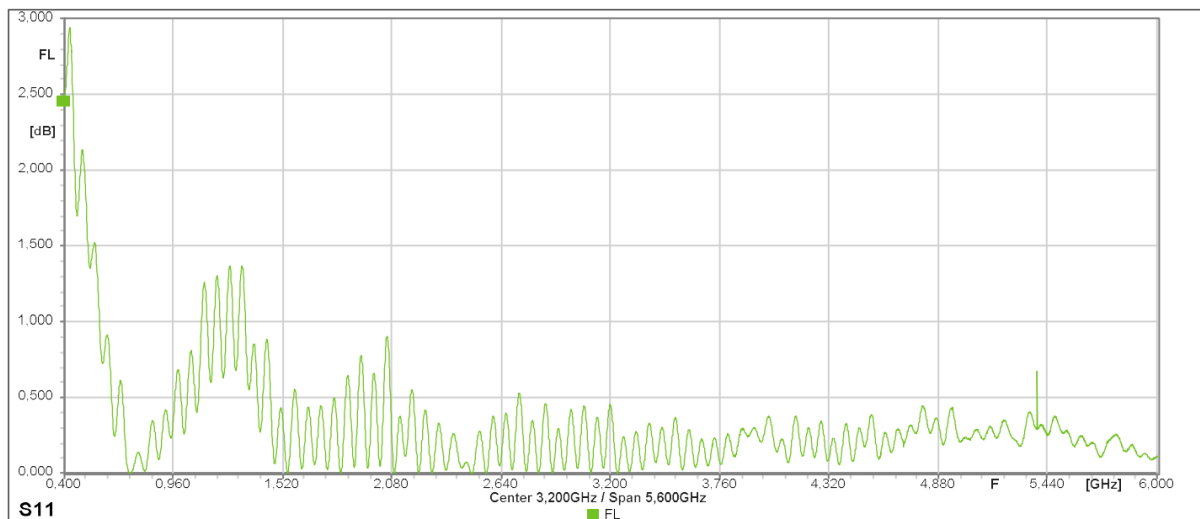
Return Loss



Antenna, Strip

ERF4013

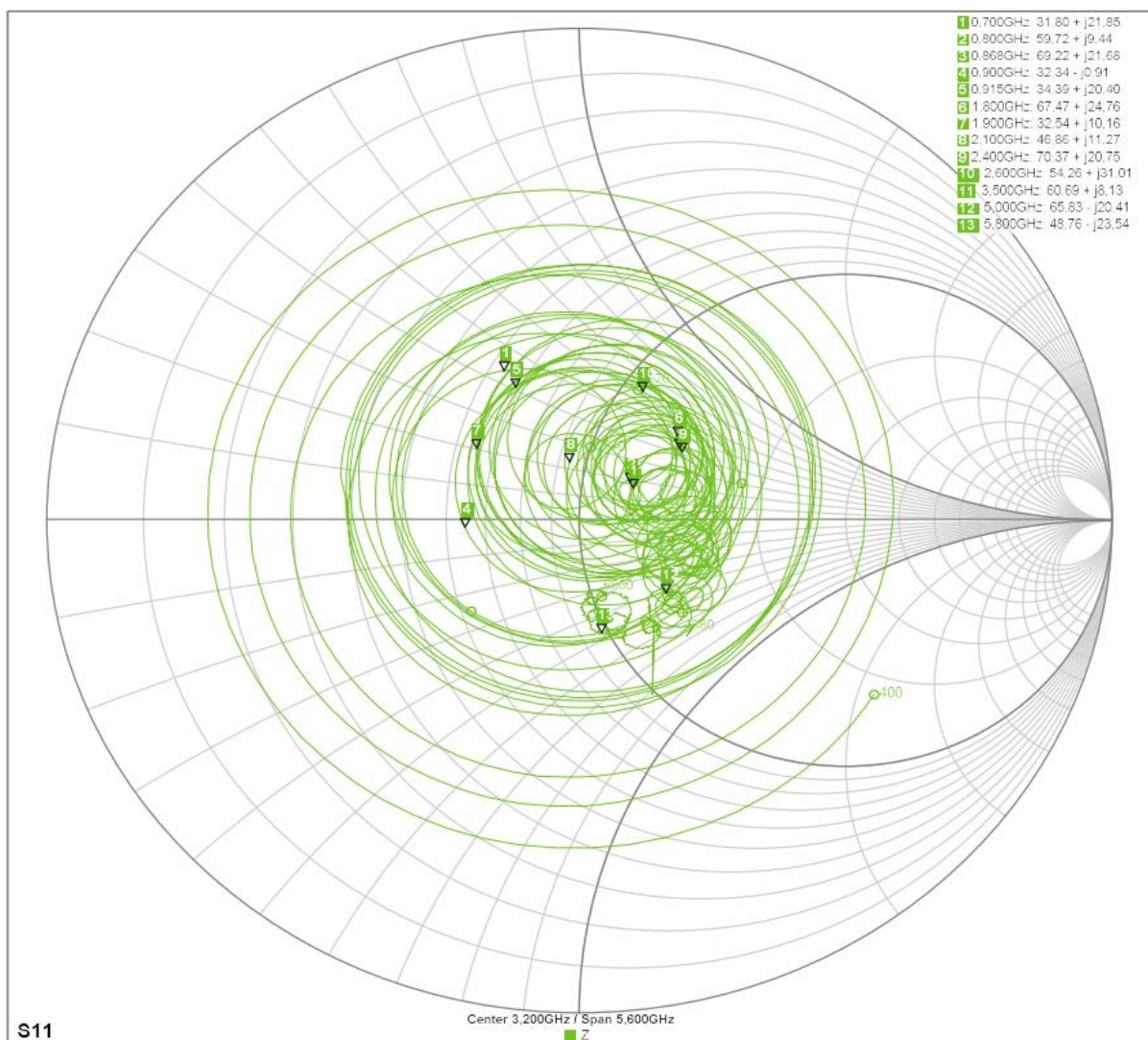
Forward Loss



Antenna, Strip

ERF4013

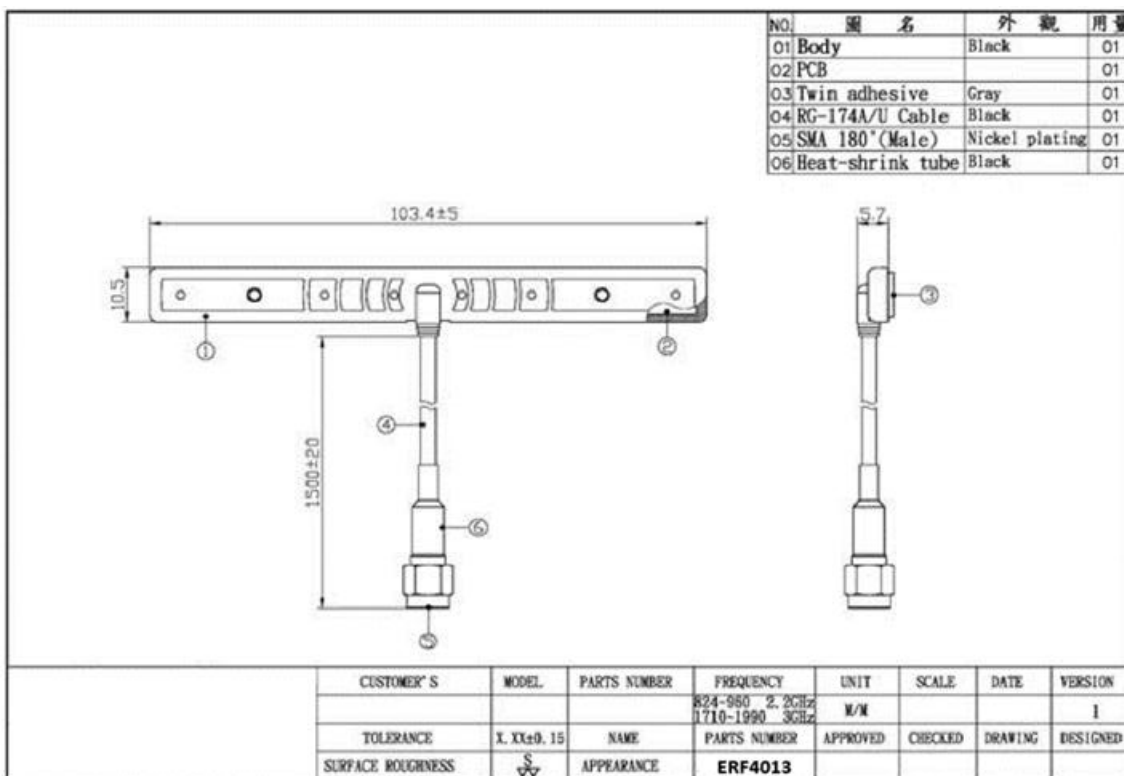
Impedance



Antenna, Strip

ERF4013

Dimensions



Connector



The ERF4013 antenna uses the SMA Male connector.

Ordering information

Ordering can be done via www.summit-electronics.com or via info@summit-electronics.com. Please contact us for more information. Customisation of the product is available on request.

Technical support

For all product questions please contact us via info@summit-electronics.com

Document revision

Rev	Date	changes
V01.00	06-04-2023	First issue of document